

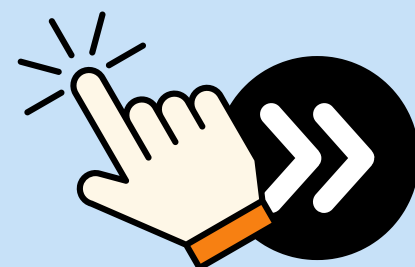


QUEEN'S
UNIVERSITY
BELFAST

How can

NotebookLM

help me?

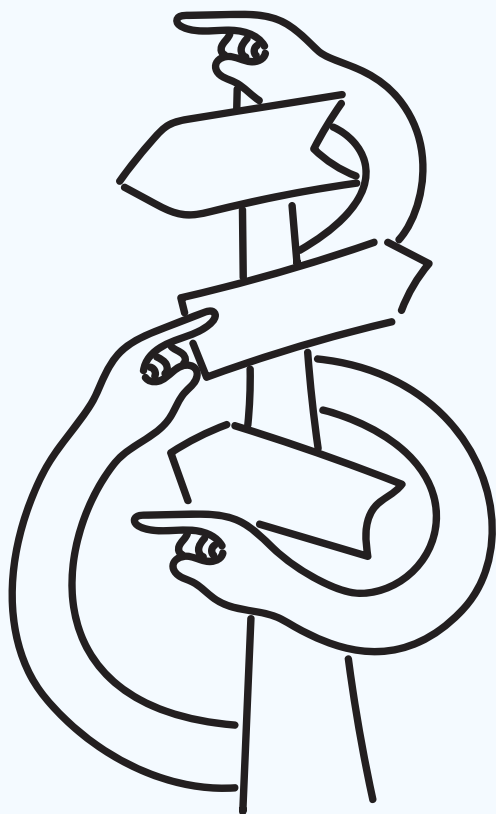




What is NotebookLM?

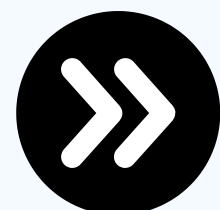
NotebookLM is an AI powered tool for 'organising and understanding information'. It can be useful for those who need personalised learning support and tailored explanations of websites, audio files, PDFs and more.





Organising

NotebookLM allows you to organise your sources in different ‘Notebooks’. Within each Notebook, users are able to upload up to fifty sources. This offers a convenient way to structure your references in a way that suits your needs, customising the experience to you.





Answering

From the sources within a notebook, users are able to ask NotebookLM questions about these uploads. This simplifies the research process by helping users quickly extract key information, identify patterns, and gain a clearer understanding





Creating

Each Notebook's 'Studio' panel generates summaries, study guides, and audio overviews. Sources can interact with each other (and with you) offering a flexible way to process and engage with information that suits different learning styles.



Stay connected for more student- friendly **AI tips** and advice

Instagram - @ced_qub

TikTok - @cedqub

Bluesky - @cedqub.bsky.social

