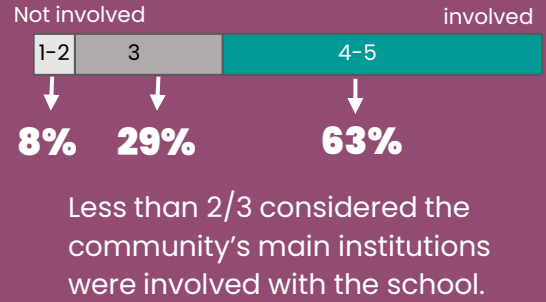
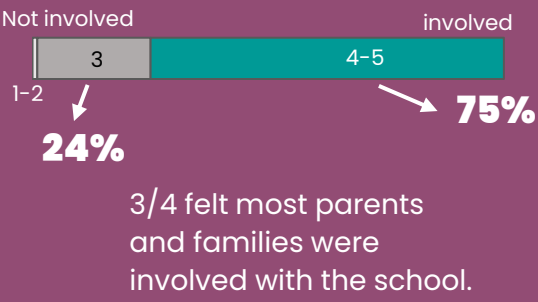
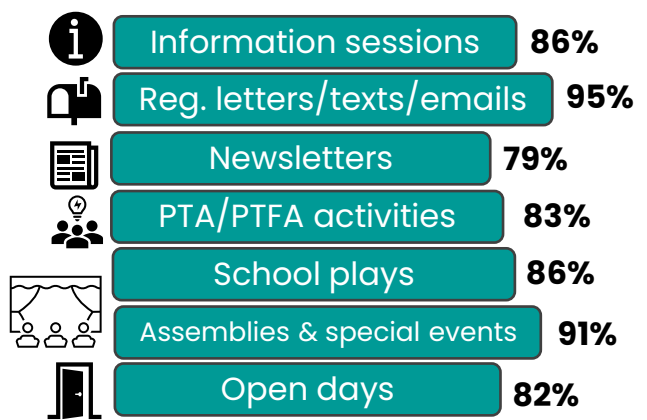
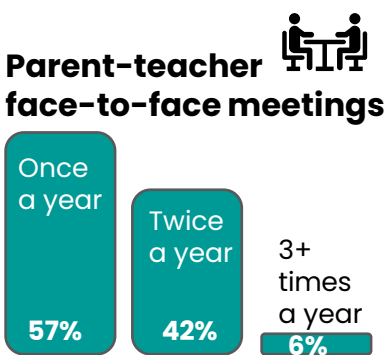


89 principals rated **parents'/ families' involvement** with the school in a scale of 1 to 5.

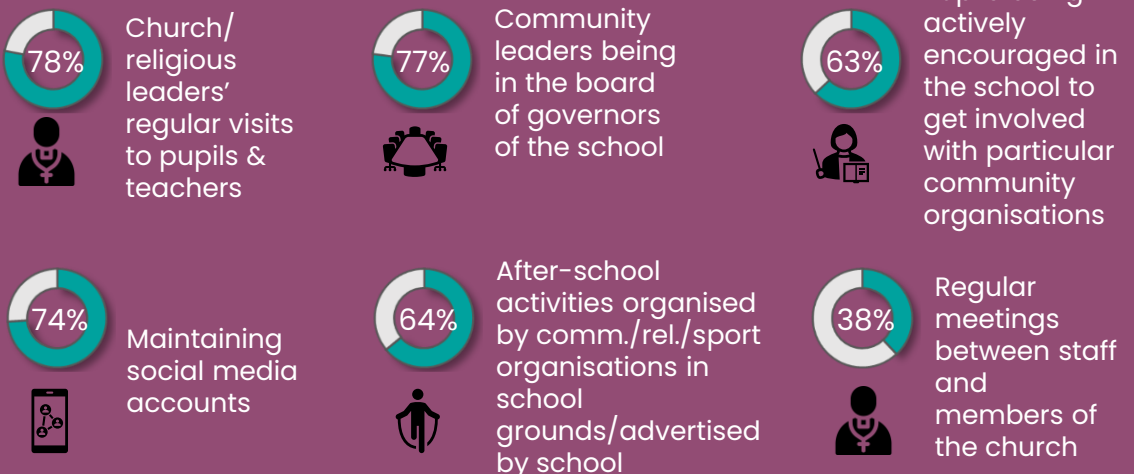
86 principals rated **community organisations' involvement** with the school in a scale of 1 to 5.



89 principals indicated the different **ways their schools engaged with parents & families** prior to the pandemic.



87 principals indicated the different **ways their schools engaged with the local community and its main institutions** prior to the pandemic.

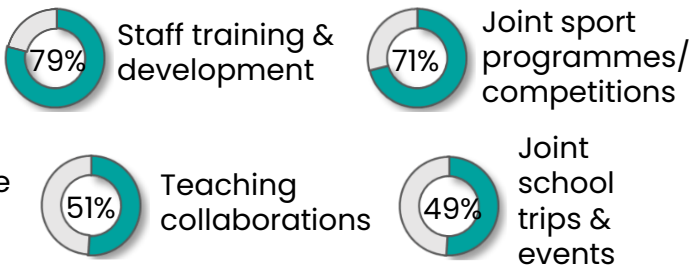


86 principals answered questions about their school **relationship with other schools**.

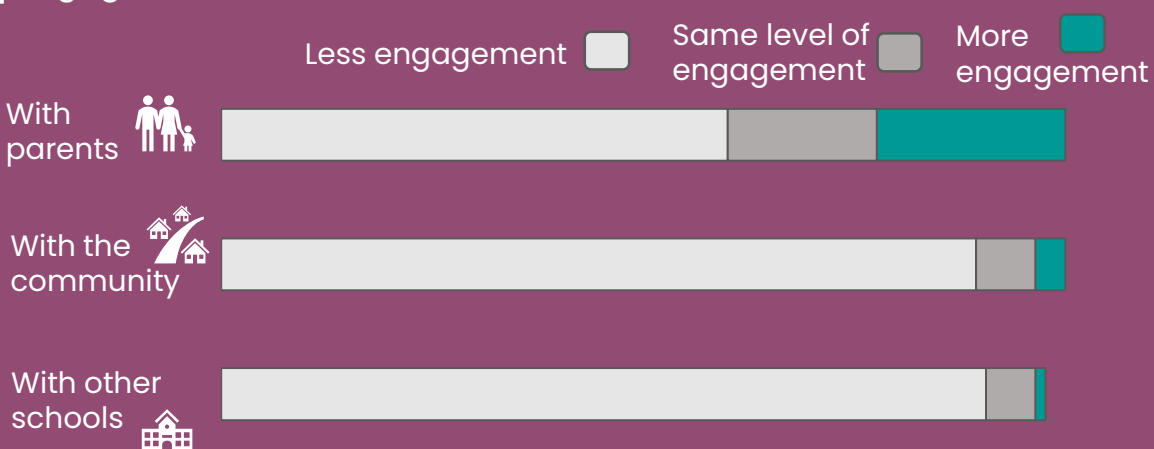
Only **2** schools did NOT have a relationship with other schools

**9** schools had a relationship just with the schools in a shared education programme

**Things the school did with other schools other than shared education:**



We also asked about **the effects of the pandemic** on the level of engagement.



The pandemic had a clear negative effect on the level of engagement between the school and the community, other schools and parents/families.