

AI Lightning Talks

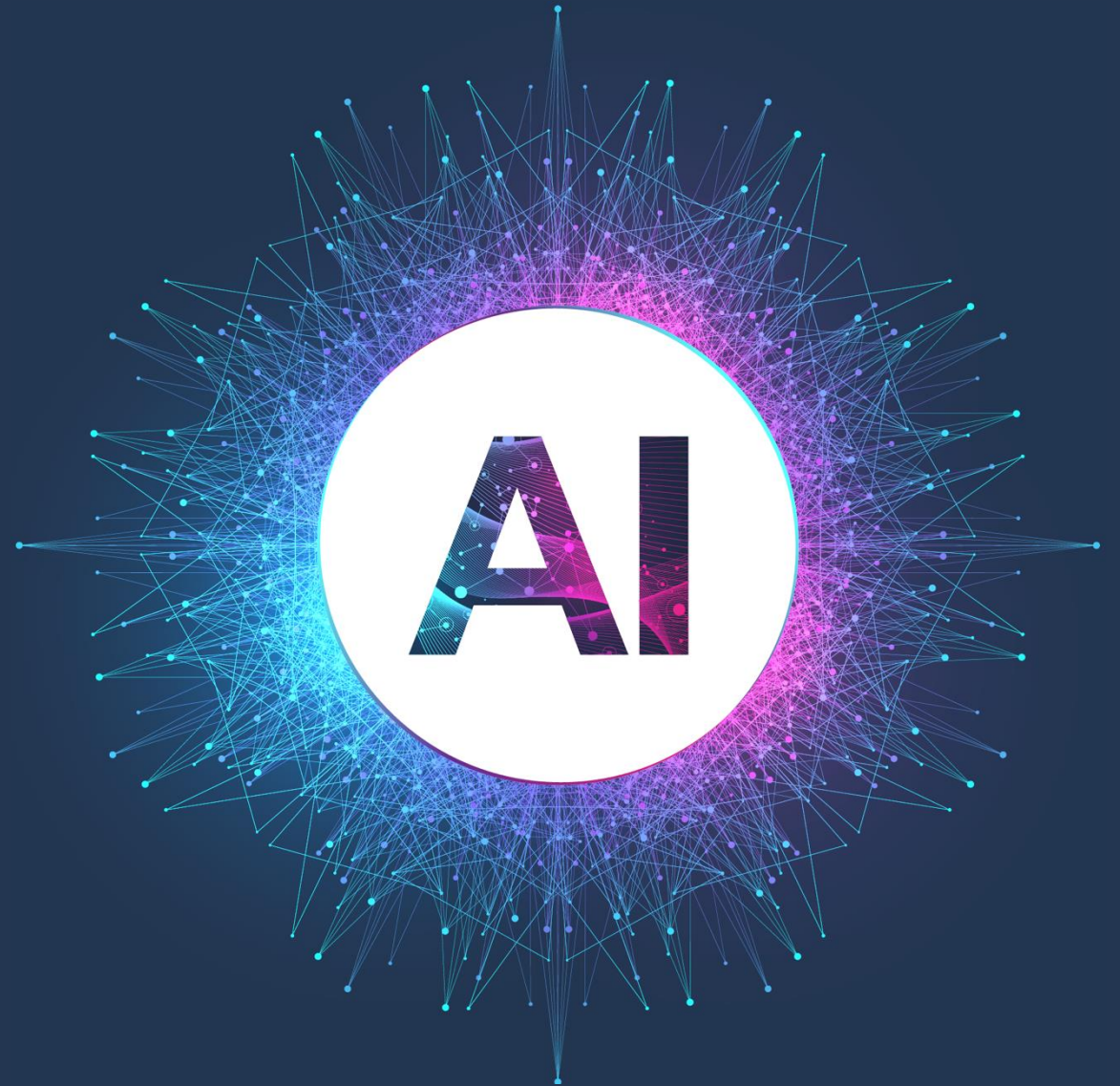
AI and Accessibility

Sarah Stewart

Assistive Technology Coordinator – Accessible Learning Support



QUEEN'S
UNIVERSITY
BELFAST



R-A-I-S-E

Our guidance is based on the RAISE Principles:
**Responsible Use, AI Best practice, Integrity,
Support, and Equitable Access.**

Key Guides

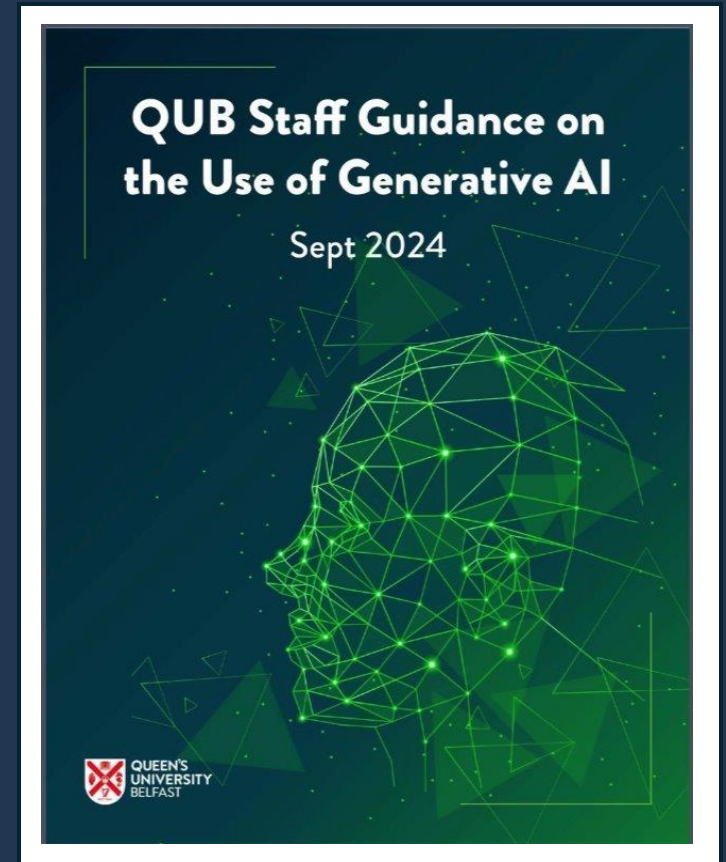
- [QUB Position on AI](#)
- [RAISE Principles: QUB Staff Guidance on the use of Generative AI](#)
- [Trailblazers Guide: AI as Your Partner](#)

AI and Assessment

- [Guidance on the use of AI in Assessment: 24-25](#)
- [Use of Gen AI in Dissertation Projects](#)
- [Use of AI Detection Tools](#)
- [AI Assessment Self-help Guide](#)

Video

Watch our short video for advice on what to look out for when starting to use Generative AI: [Click here](#)



What is Accessibility?

The practice of designing and creating content, resources, and environments so that they can be used and understood by everyone, including people with disabilities.



Why it's important



- **Inclusion:** Accessibility isn't “extra” – it's essential.



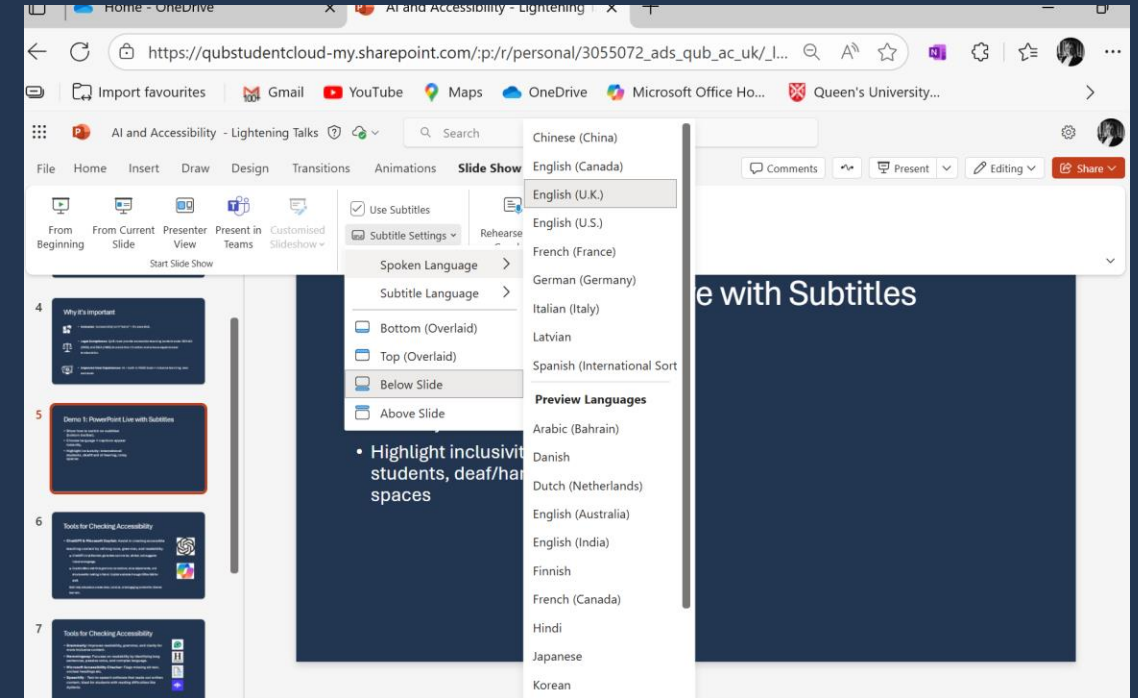
- **Legal Compliance:** QUB must provide accessible teaching content under SENDO (2005) and DDA (1995) to avoid discrimination and ensure equal access to education.



- **Improved User Experiences:** AI + built-in M365 tools = inclusive teaching, less workload.

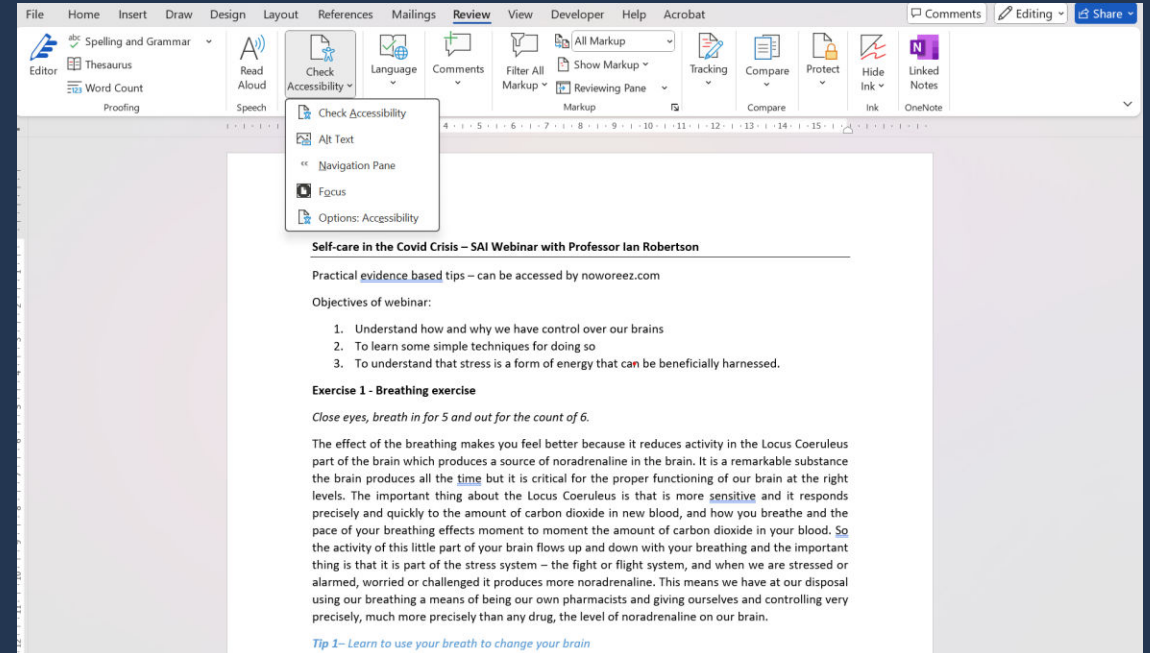
Demo 1: PowerPoint Live with Subtitles

- Show how to switch on subtitles (*toolbar – slideshow – use subtitles*)
- Choose language → captions appear instantly.
- Highlight inclusivity: international students, deaf/hard of hearing, noisy spaces
- Takes <10 seconds, benefits everyone!



Demo 2: Accessibility Checker

- Word/PowerPoint/Excel → **Review** → **Check Accessibility**.
- Like spellcheck for accessibility.
- Flags: headings, alt text, colour contrast, reading order.
- **Tip:** Run before uploading notes/slides to Canvas.



Copilot for Accessibility – Quick Wins

Create accessible content

- Rewrite text for clarity & simpler reading levels
- Generate accurate alt text for images
- Explain & fix Accessibility Checker issues

•Deliver inclusive teaching

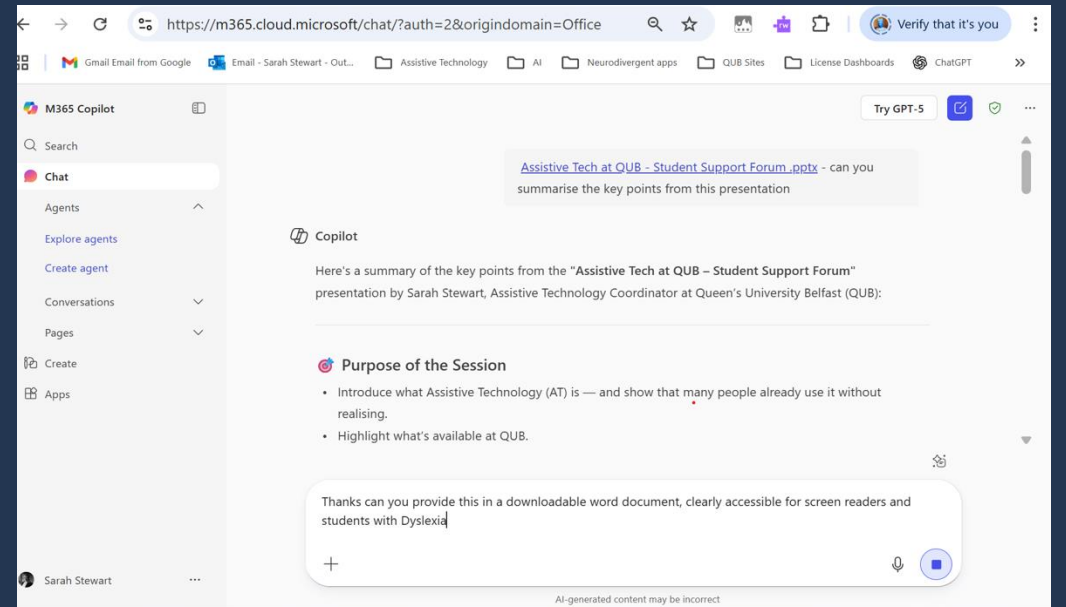
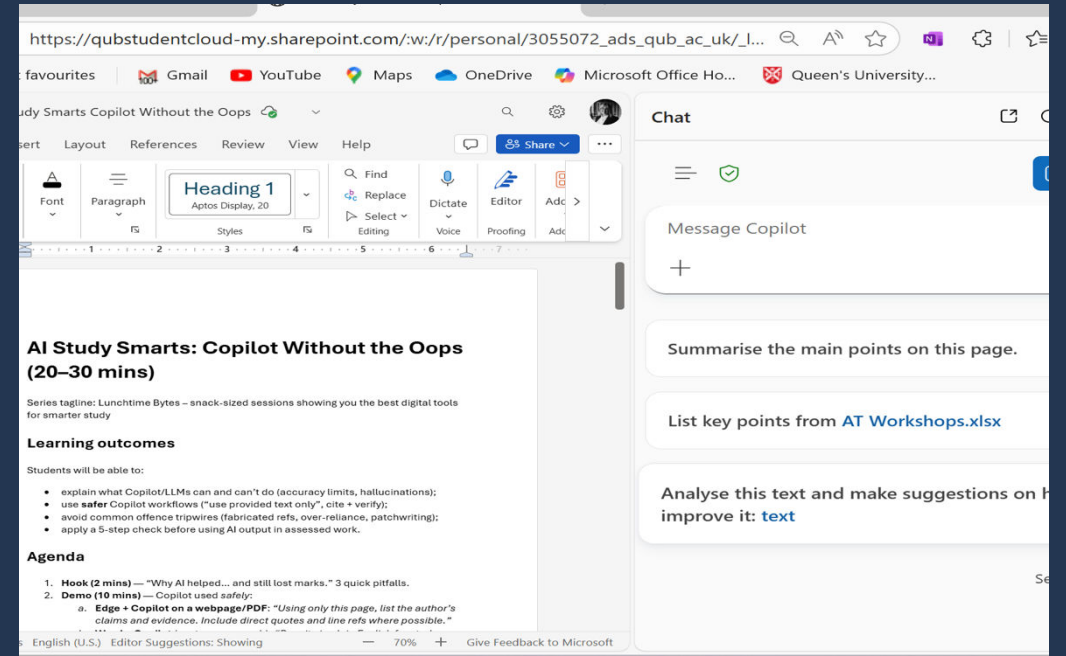
- Add live subtitles & translations in PowerPoint
- Summarise slides/notes for easier revision
- Rephrase assignment briefs & instructions

•Support student learning

- Generate revision questions & practice quizzes
- Turn notes into outlines or mind-maps
- Provide real-world examples to aid understanding

•Boost staff productivity

- Draft rubrics in plain, inclusive language
- Suggest alternative formats (audio, summary, visual)
- Summarise meetings into clear action points



Resources and support

- **Microsoft Accessibility Fundamentals:**
<https://learn.microsoft.com/en-us/training/paths/accessibility-fundamental/>
- **Accessibility video training** - <https://support.microsoft.com/en-gb/office/accessibility-video-training-71572a1d-5656-4e01-8fce-53e35c3caaf4>
- **Apple Accessibility Support** - <https://support.apple.com/en-gb/accessibility>
- **Microsoft Assistive Technology** - <https://www.microsoft.com/en-us/accessibility/resources#areaheading-uid48a3>

Questions?

