

AI Building Blocks Series

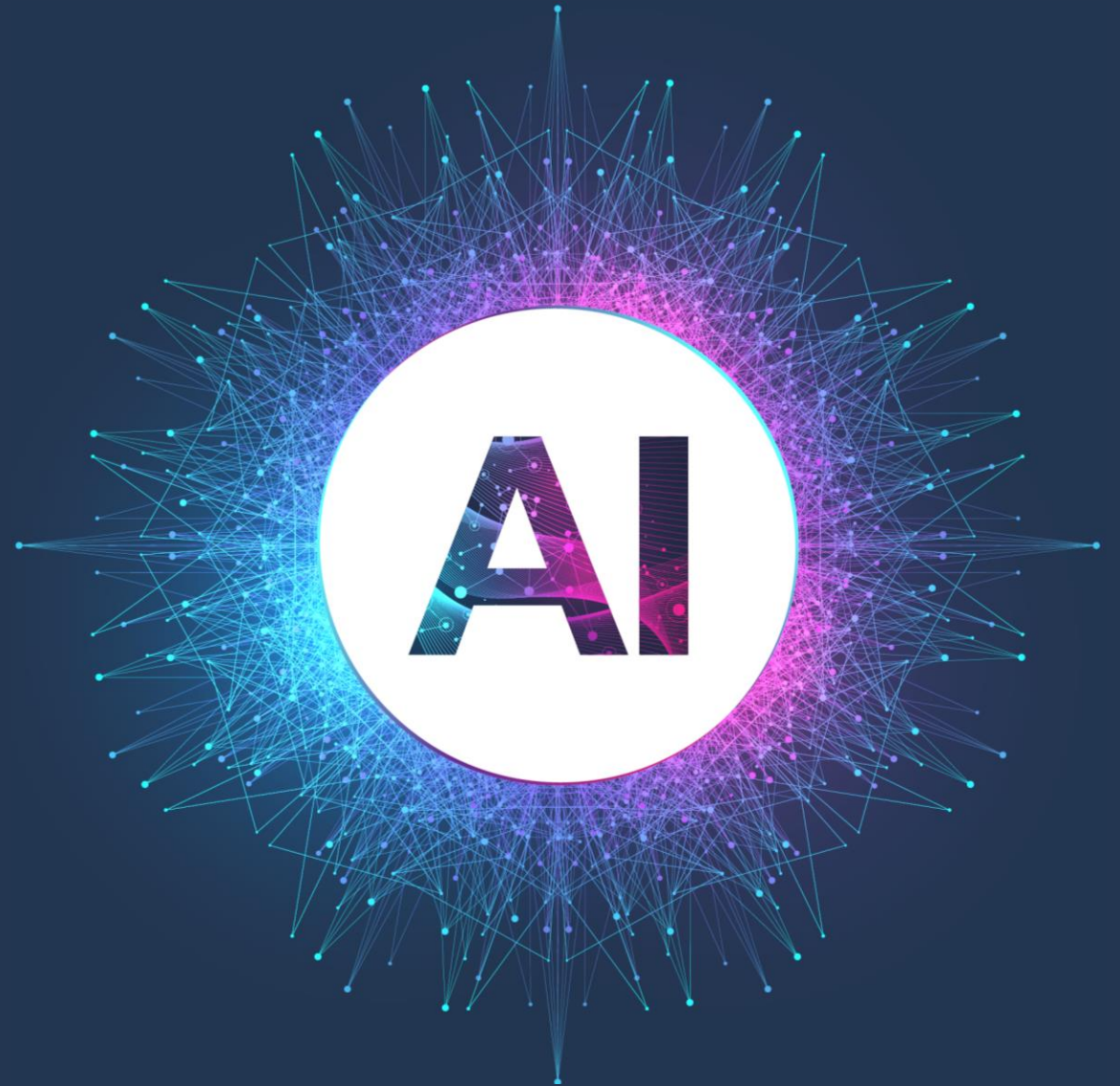
AI Ethics

Dr Aidan Deery

Digital Learning Designer – CED



QUEEN'S
UNIVERSITY
BELFAST





AI Building Blocks Series

AI Foundations

13 Feb, 11am

Aidan Deery

AI Ethics

20 Feb, 11am

Aidan Deery

AI for Everyday Tasks

27 Feb, 11am

Una Lynch

AI and Accessibility

06 Mar, 11am

Sarah Stewart

AI for Teaching and Learning

13 Mar, 11am

Kirsty Gillen

Pedagogy Over Tech

7 Steps for Active Learning with AI

20 Mar, 11am

Patrick Phillips

AI for Research

27 Mar, 11am

Vilinda Ross, Aidan Deery



[Live Sessions: Sign up here](#)



[Recorded Sessions: Catch up here](#)

R-A-I-S-E

Our guidance is based on the RAISE Principles:
**Responsible Use, AI Best practice, Integrity,
Support, and Equitable Access.**

Key Guides

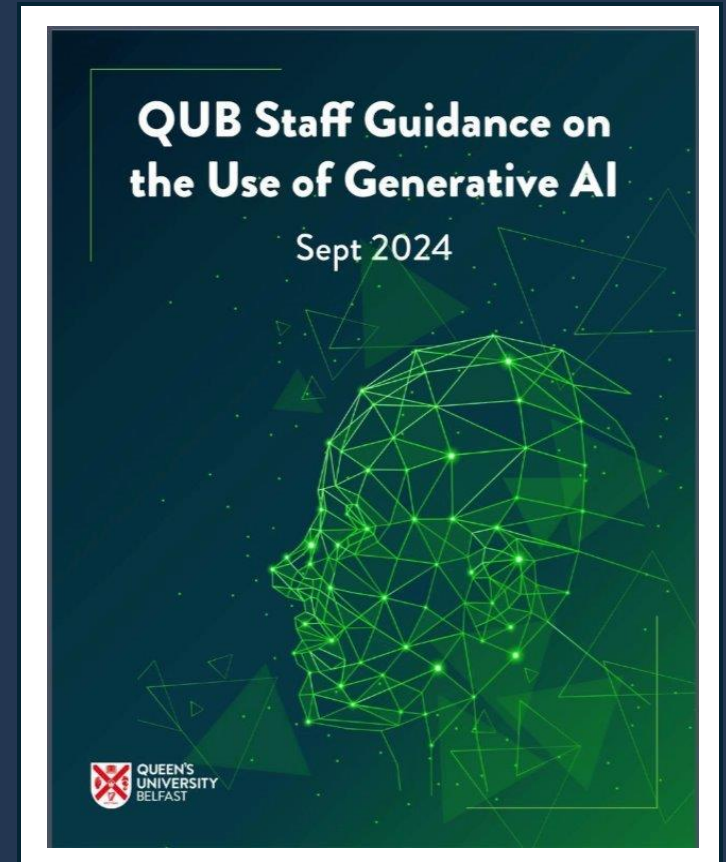
- [QUB Position on AI](#)
- [RAISE Principles: QUB Staff Guidance on the use of Generative AI](#)
- [Trailblazers Guide: AI as Your Partner](#)

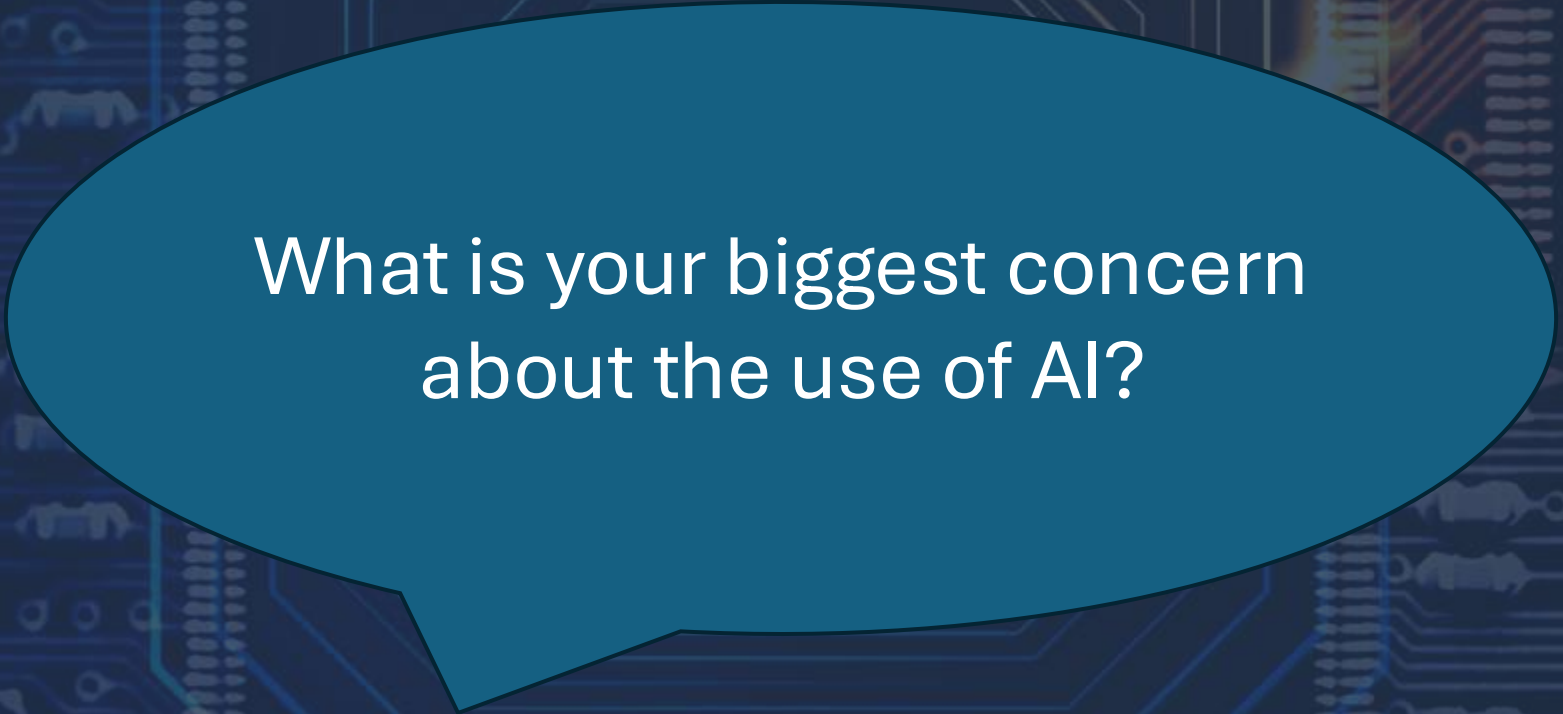
AI and Assessment

- [Guidance on the use of AI in Assessment: 24-25](#)
- [Use of Gen AI in Dissertation Projects](#)
- [Use of AI Detection Tools](#)
- [AI Assessment Self-help Guide](#)

Video

Watch our short video for advice on what to look out for when starting to use Generative AI: [Click here](#)

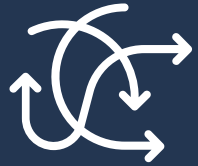




What is your biggest concern
about the use of AI?



AI Ethics – Hopes and Fears



Identifying Challenges



Proposing Mitigations



AI is not inherently good or bad. Like cell phones and social media, artificial intelligence is just a tool. It's an instrument for getting you from A to B. Its goodness or badness depends solely on how it's used.

Dr Bruce Weinstein

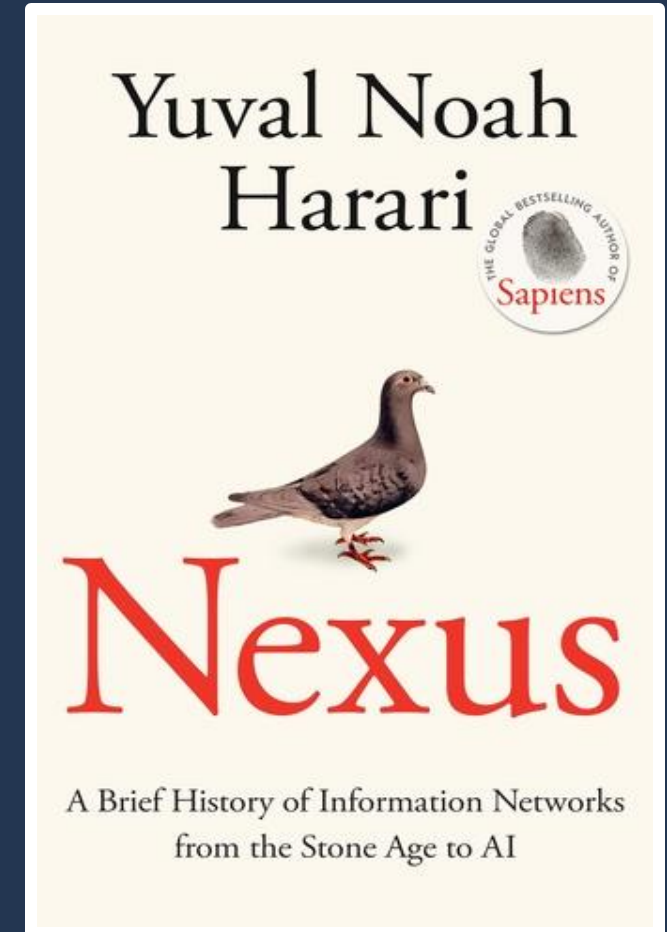


Whether AI Is Good Or Bad Depends On This One Thing

Artificial intelligence represents a transformative shift in human history by being the first technology capable of making autonomous decisions.

Yuval Noah Harari

*Nexus: A Brief History of Information
Networks from the Stone Age to AI*



"AI is probably the most important
thing humanity has ever worked on"

Sundar Pichai, Google CEO

Prof Stephen Hawking
(2014)

"The development of full artificial
intelligence could spell the end of
the human race"

"AI will probably most likely lead to the end of
the world...
but in the meantime, there'll be great companies"

Sam Altman,
OpenAI CEO



Focusing on existential or hypothetical risks detracts from the current, actual risks.

Sasha Luccioni



AI Is Dangerous, but Not for the Reasons
You Think | Sasha Luccioni | TED

Global AI ethics has converged on a set of five principles (Jobin et al, 2019):

- Non-maleficence
- Responsibility or Accountability
- Transparency and Explainability
- Justice and Fairness
- Respect for Human Rights, such as Privacy and Security.

 [Jobin et al. \(2019\): The global landscape of AI ethics guidelines](#)

 [Statement on Inclusive and Sustainable Artificial Intelligence for People and the Planet](#)
(Statement from AI Action Summit, Paris - Feb 2025)

‘Mainlined into UK’s veins’: Labour announces huge public rollout of AI

Plans to make UK world leader in AI sector include opening access to NHS and other public data



[‘Mainlined into UK’s veins’: Labour announces huge public rollout of AI](#)

[Why Starmer and Reeves are pinning their hopes on AI to drive growth in UK](#)



Academic Integrity



(In)accuracy



Bias



Data Security/Privacy



Environmental Cost



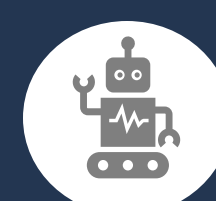
Misuse



Misinformation



Impact on Creativity



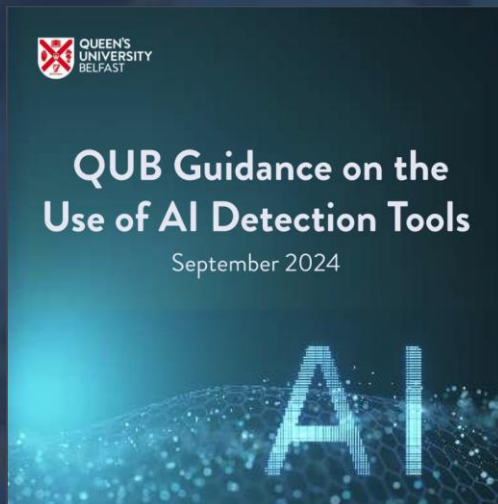
Future Jobs



Academic Integrity

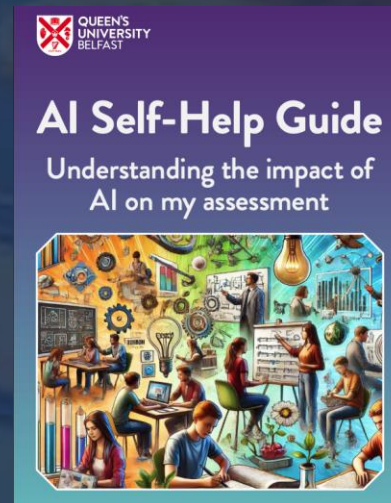
How can (or should) I detect the use of AI?

Use a 'Broad Detection System'



go.qub.ac.uk/AI-Detection

Consider the impact of AI on assessment



go.qub.ac.uk/AI-Self-Help

Jisc: Designing assessment in an AI enabled world

Consider the 'process'
How do you meaningfully capture how the assessment was completed?



Academic Integrity

How can (or should) I detect the use of AI?

Promote AI as a collaborator
for staff/students

AI Support for Students

We've developed a range of resources designed with students in mind to help them make the most of AI in their academic studies. These resources include an AI Glossary to simplify complex terms, a Library guide to help to cite AI, resources on how to use AI effectively for academic success, and tips for integrating Generative AI into student learning. Whether you are refining research topics, preparing for exams, or exploring new ways to learn, these resources have been created to support students every step of the way.

Students can also start to build their AI skills and confidence. Discover the Jisc AI Question Set, designed to help to develop essential AI skills and explore how to use this transformative technology effectively in academic studies.



AI Resources

These dedicated resources include an AI Glossary for understanding foundational AI concepts, a guide titled, 'How to use AI for Academic Success', and a guide on 'How to Use Generative AI in your studies at Queen's'.

More resources will be added over time, so stay tuned for future updates.



AI Glossary



How to use Generative AI in your studies



How to use AI for Academic Success



AI Self-Help Guide

Using AI to Save Time



go.qub.ac.uk/AI-Student-Support

[Self Help: Using AI to Save Time](#)



Academic Integrity

Referencing AI

APA Example

Citation order:

- Author of AI program
- Year of the program version used (in round brackets)
- Name of AI (as the title, in italics)
- Version, if applicable (in round brackets)
- Description of program (for context, in square brackets)
- Publisher, if different from the author
- URL, if applicable

libguides.qub.ac.uk/AIlibrary

[Dalhousie University: Citing AI](#)

How do I declare the use of AI?

Declaring the use of AI

AI Declaration Statement example - include the following information to acknowledge use of AI tools:

- AI tool (e.g. Copilot, ChatGPT, Claude, Gemini)
- Description of how you used the tool (e.g. edited/corrected/translated/planned/brainstormed)
- Prompt(s) used (if applicable)
- Part, section or page of the paper / assessment
- Date(s)
- Transcript of conversation (if applicable)

[University of Queensland: AI tools for assignments](#)

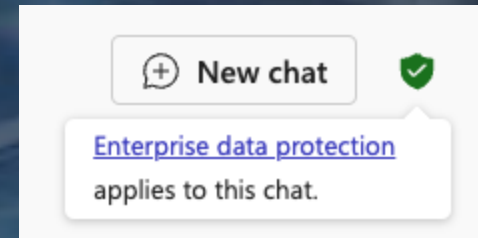


Data Security and Privacy

How can I protect my data when using AI?

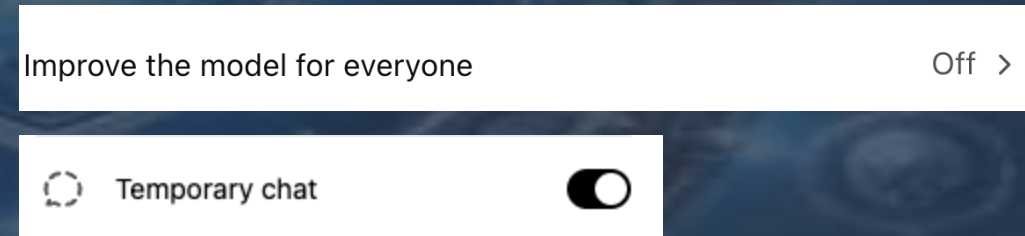
Use Copilot Chat

- Sign in with QUB credentials
- Includes Enterprise Data Protection



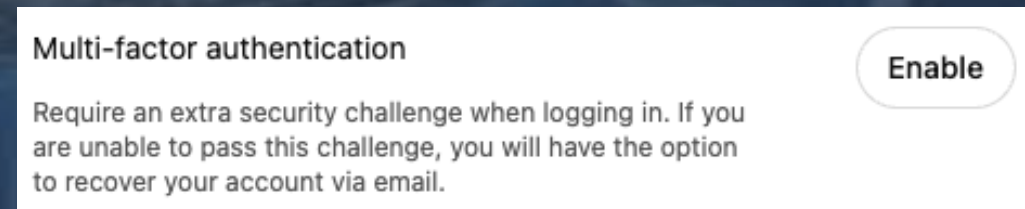
Identify Data Settings

- ChatGPT – Settings > Data Controls
- Use Temporary Chat if required



Use MFA

- Multi-Factor Authentication
- ChatGPT - Settings > Security





Data Security and Privacy

What should not be shared with AI Tools?

Do not share any sensitive data

Do not share any copyrighted material

AI and the Library: Uploading content to LLMs



(In)accuracy

How can I trust AI-generated outputs?

Use AI

Understand the nature of
AI-generated outputs

Emphasise Critical Thinking

Understand the nature of AI-
generated outputs

Trust your expertise

Use a subject you're familiar
with to test outputs

Verify Outputs

Check accuracy of outputs
Ask for evidence



Bias

Are AI-generated outputs biased?

"The opaque nature of AI training datasets means that biases in the data can reinforce societal inequalities without clear accountability."

ChatGPT

Training Data Bias
Algorithmic Bias
User-input Bias

Use AI

Understand the nature of
AI-generated outputs

Enhance your prompts
Clear prompts help mitigate bias

AI Debate

Ask the AI to debate its own answer

Ask for evidence

Request a source for info



Misuse



Misinformation

How can AI-generated content be misused?

- Online misinformation
- Deep fakes
- AI scams

Develop a critical understanding of how AI can generate online content.

Detection tools:

- Sensity: Deep Fake Detector
- TinEye: Reverse Image Search
- GPTZero: AI Text Detector



Environmental Concerns

Should I worry about energy use?

Training and running AI systems places additional burden on energy consumption.

1 Chatbot query = Powering a lightbulb for 20 mins / 10x Google Search
[University of Wisconsin-Madison](#)

Generating 1 AI image = Fully charging your smartphone
[MIT Technology Review](#)

Consider the bigger picture of energy use

[AI Energy Score: new tool to measure energy efficiency of AI models](#)

Avoid Excessive image/video generation
(or run local models to generate content)

Track your emissions
codecarbon.io

Offset Carbon
[Carbon Offset Calculator](#)



Impact on Creativity

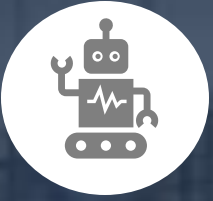
- Creative work is used to train AI
- Creative jobs are at risk from AI-generated artwork

Spawning AI - Have I been trained?
Check if your creative work has been used to train AI

How will AI impact creativity?

Co-creativity?

- AI Hub Case Studies: AI in Music Education and Research
- AI Hub Blog: AI and the Death of Humanity - Lessons for Educators
- Holding the Line: A Study of Writers' Attitudes on Co-creativity with AI
- Integrating Generative AI into the Creative Process - LinkedIn Learning



Future Jobs

How do I prepare for
the future of work?

Develop knowledge of
impact of AI in your own
area

Encourage use and
knowledge of AI in your
teams / schools / courses

Prepare for AI-enhanced
workplaces by exploring
beneficial AI use cases

R-A-I-S-E

- Responsible Use
- AI Best practice
- Integrity
- Support
- Equitable Access



Questions?

Feedback Form

Please take a couple of minutes to tell us your thoughts on the session, and AI support at Queen's:

forms.office.com/e/pqf5g8jh9Z

AI Building Blocks Series

