

QUB Student Guidance on the Use of Generative AI

Sept 2023



QUEEN'S
UNIVERSITY
BELFAST

R-A-I-S-E

Welcome to the university's guide on using generative AI for students. We want to use AI to help both students and staff. Our goal is to make learning better, improve how we teach, and ensure that our students acquire the skills essential for success in their future careers. As we integrate AI, we will do so responsibly, taking into account AI's ethical and social implications.

This guide outlines the principles we commit to uphold and provides practical advice on the adoption and use of generative AI.

Responsible Use

Students will receive support to understand AI, including its opportunities, limitations, and ethical issues.

Students are encouraged to use AI appropriately to support learning. This might include using AI to summarise course materials or as a personal tutor that can explain concepts and ask revision questions. While AI offers a means to improve our productivity and understanding, it needs to be used carefully and appropriately.

Generative AI systems are trained on vast amounts of data, typically sourced from a wide range of public or online resources. They operate by generating outputs that draw upon statistical patterns contained within the training data. However, current generative AI systems do not possess the critical analysis or ethical judgment typically associated with human intelligence. As a result, AI systems might deliver inaccurate or even fabricated information, sometimes referred to as ‘hallucinating’.

Moreover, if the training data contains biased, false, or otherwise inappropriate information, then this may be included within the generated output. Therefore, results from generative AI systems should always be carefully checked and validated. Beyond this, care must also be taken when using public AI tools that confidential or protected data is not submitted as this may be a breach of data protection requirements.

For more guidance on the appropriate use of AI, please visit [Queen’s AI Hub](#).



AI Best Practice

The University will collaborate broadly on AI best practices, building diverse partnerships and emphasising interdisciplinary and ethical approaches.

Several AI discovery working groups have been established. These groups bring together those who want to take on a more active role in exploring how AI can be integrated into our activities. This includes exploring new developments, creating case studies, and influencing broader discussions. If you're interested in participating, please contact get in contact at AI-Hub@qub.ac.uk.

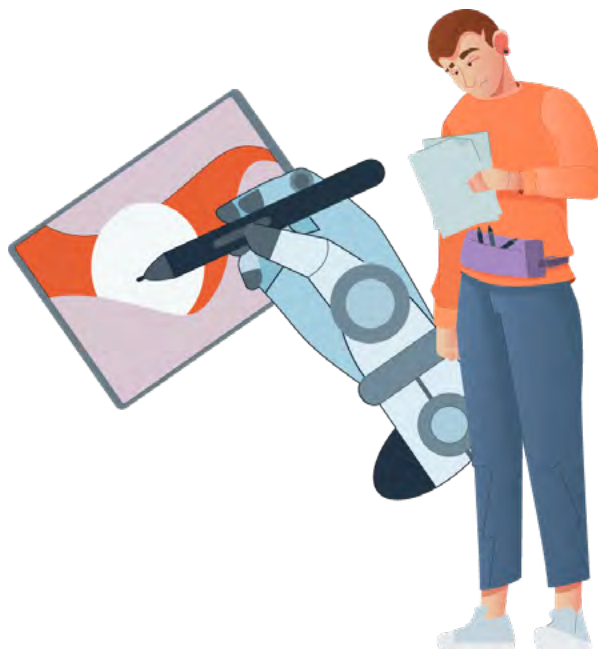


Integrity

Integrity and academic rigour will be upheld.

Academic integrity is of paramount importance and rigorously upheld within all programmes. Students need to be fully aware of when and how they can use AI in assessments, including any limitations on certain tools or the need to cite or document how AI has been used. If students misuse AI, they will be subject to the University's [academic misconduct regulations](#).

This academic year, those delivering modules will clarify if and how AI can be used when completing assessment. If you have any doubts about how AI can be used, please consult your tutors. It's always better to be sure than to take risks.

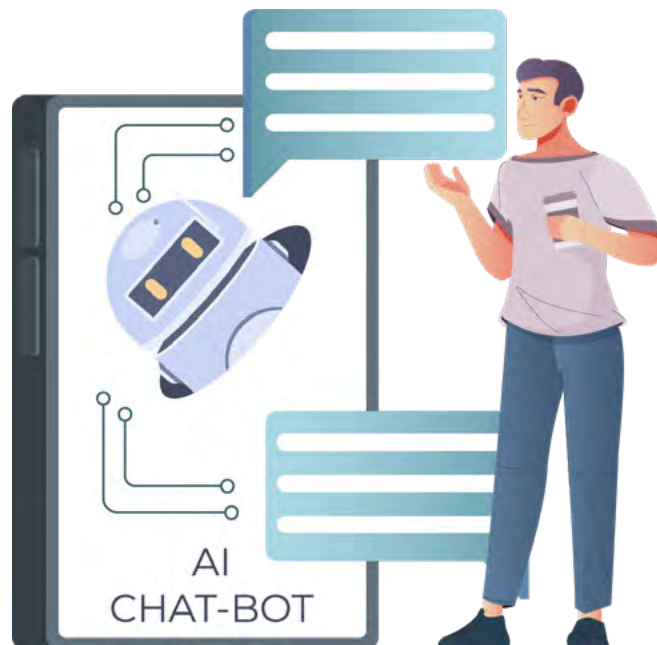


Support

Students will be guided on how to use AI effectively and appropriately.

Support available for students: [Queen's AI Hub](#) offers comprehensive information on different aspects of AI and is accessible to both staff and students. Explore the [responsible use of AI](#) and how it can be applied to education and research, or how it can be used to improve our efficiency and effectiveness. Additionally, [adoption guides](#) tailored to students are available.

Available AI tools and systems: Guidance on the use of AI tools, including both QUB-supported tools and publicly available/open systems, can be found at [Queen's AI Hub](#).



EQUITABLE ACCESS

Teaching and assessment practices will be adapted to incorporate appropriate AI tools, ensuring equitable access for students.

All students will have opportunities to learn and develop skills in the appropriate use of AI tools during their studies. These skills will be essential in many future careers. Alongside this, AI can also be a valuable aid in learning and revising. However, it's crucial to use AI correctly. It's not a panacea and can be misused.

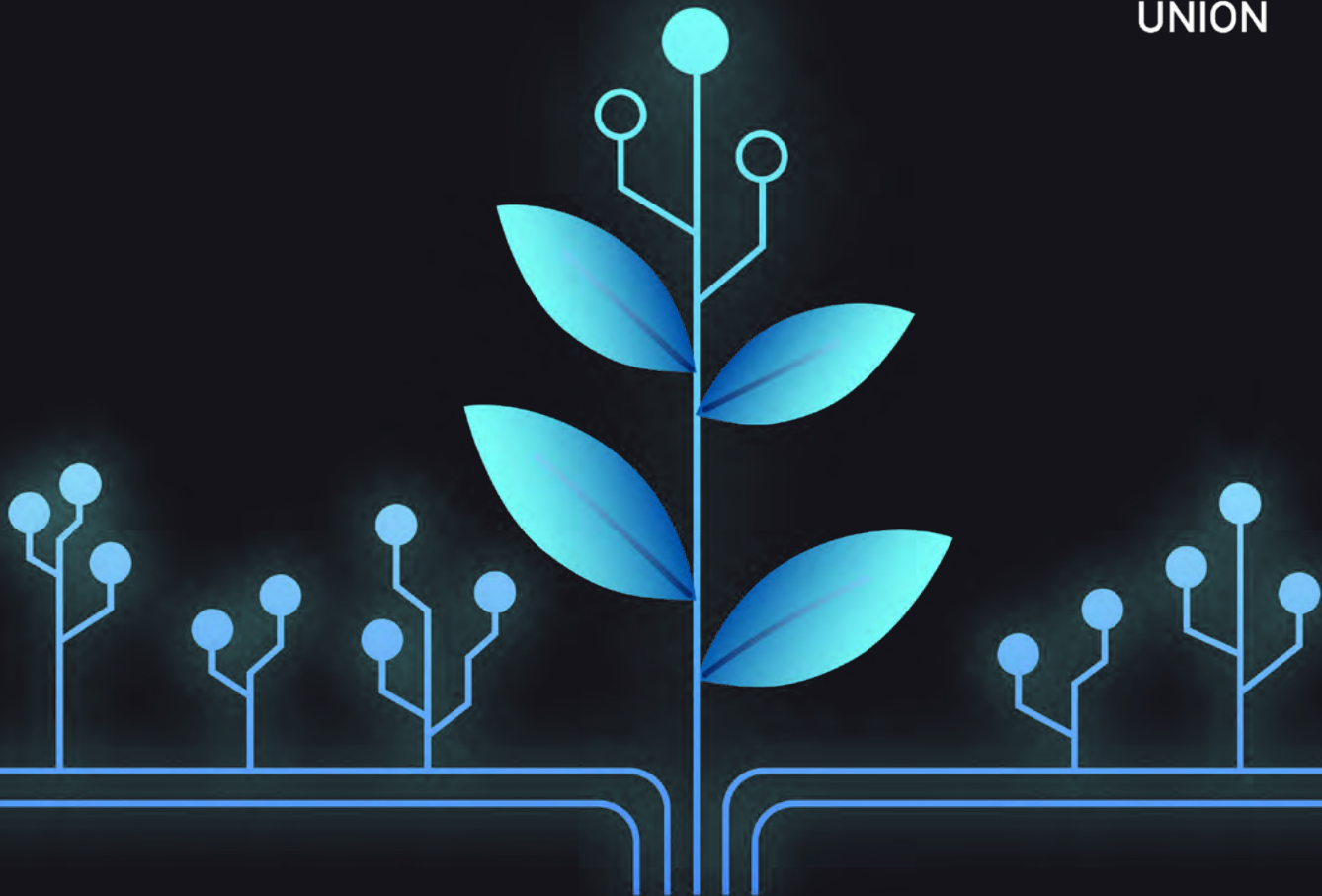




QUEEN'S
UNIVERSITY
BELFAST



QUEEN'S
STUDENTS'
UNION



AI will be a powerful tool to support student learning and prepare for future careers. But, with great power comes great responsibility.

Share your experience of using AI in your learning with us. We want you to shape how the University can make AI relevant to your student life.

Students and AI